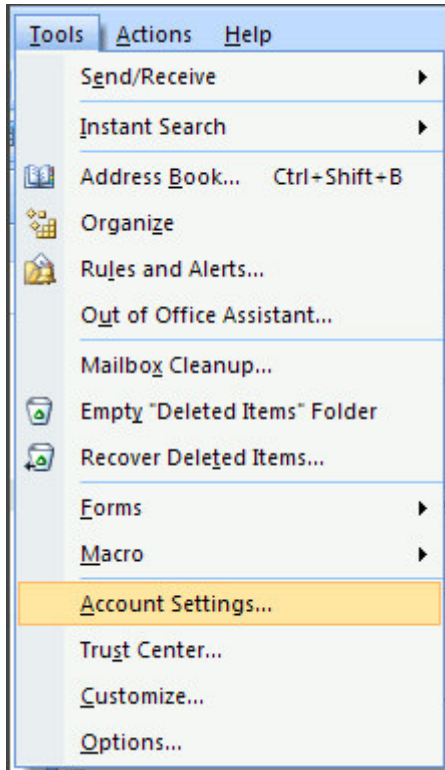


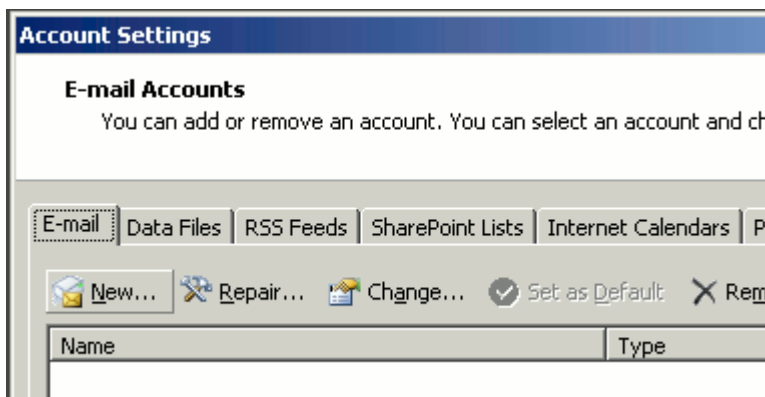


Outlook 2007

1. In Outlook 2007, from the **Tools** menu, select **Account Settings**.



2. On the **E-mail** tab, click **New**.



Feel free to call on +919811684952

Email:
info@syspara.com
shuaib@syspara.com

Website:
www.syspara.com



3. Select **Microsoft Exchange, POP3, IMAP, or HTTP** and click **Next**.

Add New E-mail Account

Choose E-mail Service

Microsoft Exchange, POP3, IMAP, or HTTP
Connect to an e-mail account at your Internet service organization's Microsoft Exchange server.

Other
Connect to a server type shown below.

Outlook Mobile Service (Text Messaging)

4. Check **Manually configure server settings or additional server types** and click **Next**.

Manually configure server settings or additional server types

5. Select **Internet E-mail** and click **Next**.

Add New E-mail Account

Choose E-mail Service

Internet E-mail
Connect to your POP, IMAP, or HTTP server to send and receive mail.

Microsoft Exchange
Connect to Microsoft Exchange for access to your e-mail.

Other
Connect to a server type shown below.

Outlook Mobile Service (Text Messaging)



Systems & Paradigms Consulting

6. Enter the requested information:
 - **Your Name:** your name
 - **Email Address:** the email address the messages will be sent from
 - **Account Type:** POP3
 - **Incoming Mail server:** mail.domainname.xyz
 - **Outgoing Mail server:** mail.domainname.xyz
 - **User Name:** the full email address
 - **Password:** the password for the email address

Add New E-mail Account

Internet E-mail Settings
Each of these settings are required to get your e-mail account working.

User Information

Your Name: your name
E-mail Address: user@domain.com

Server Information

Account Type: POP3
Incoming mail server: mail.domain.com
Outgoing mail server (SMTP): mail.domain.com

Logon Information

User Name: user@domain.com
Password: *****
 Remember password
 Require logon using Secure Password Authentication (SPA)

Test Account Settings

After filling out the information on this screen, we recommend you test your account by clicking the button below. (Requires network connection)

Test Account Settings ...

More Settings ...

< Back Next > Cancel

7. Click **More Settings**.

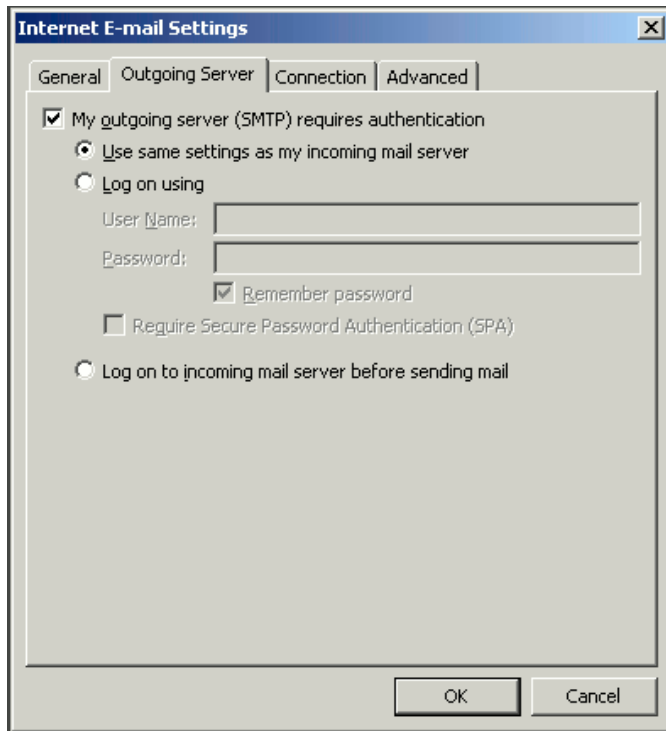
Feel free to call on +919811684952

Email:
info@syspara.com
shuaib@syspara.com

Website:
wwwsyspara.com



8. On the Outgoing Server tab, check **My outgoing server (SMTP) requires authentication**.



9. Select **Use same settings as my incoming mail server** and click **OK**.
10. Click **Test Account Settings** to verify everything is configured correctly.
11. Click **Next** and then click **Finish**.